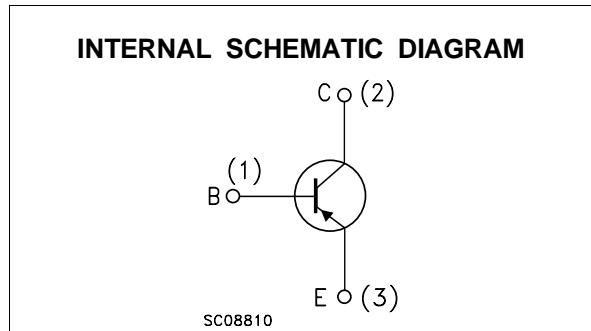
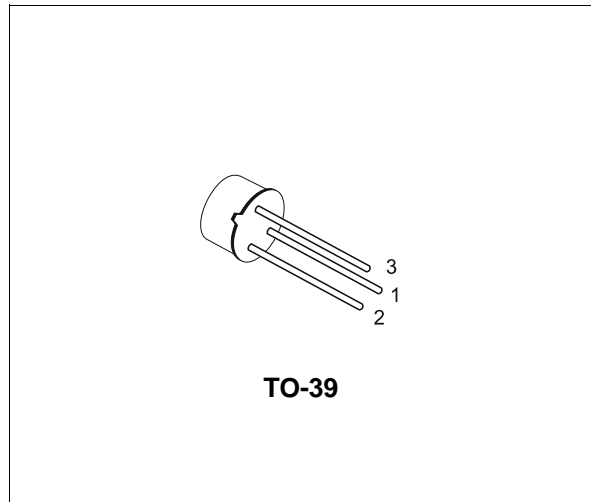


SMALL SIGNAL PNP TRANSISTOR

DESCRIPTION

The 2N5322 is a silicon Epitaxial Planar PNP transistor in Jedec TO-39 metal case. It is especially intended for high-voltage medium power application in industrial and commercial equipments.

The complementary NPN type is 2N5320.



ABSOLUTE MAXIMUM RATINGS

Symbol	Parameter	Value	Unit
V_{CBO}	Collector-Base Voltage ($I_E = 0$)	-100	V
V_{CEV}	Collector-Emitter Voltage ($V_{BE} = 1.5V$)	-100	V
V_{CEO}	Collector-Emitter Voltage ($I_B = 0$)	-75	V
V_{EBO}	Emitter-Base Voltage ($I_C = 0$)	-6	V
I_C	Collector Current	-1.2	A
I_{CM}	Collector Peak Current	-2	A
I_B	Base Current	-1	A
P_{tot}	Total Dissipation at $T_{amb} = 25\text{ }^\circ\text{C}$	1	W
P_{tot}	Total Dissipation at $T_C = 25\text{ }^\circ\text{C}$	10	W
T_{stg}	Storage Temperature	-65 to 175	$^\circ\text{C}$
T_j	Max. Operating Junction Temperature	175	$^\circ\text{C}$

THERMAL DATA

R _{thj-case}	Thermal Resistance Junction-Case	Max	15	°C/W
R _{thj-amb}	Thermal Resistance Junction-Ambient	Max	150	°C/W

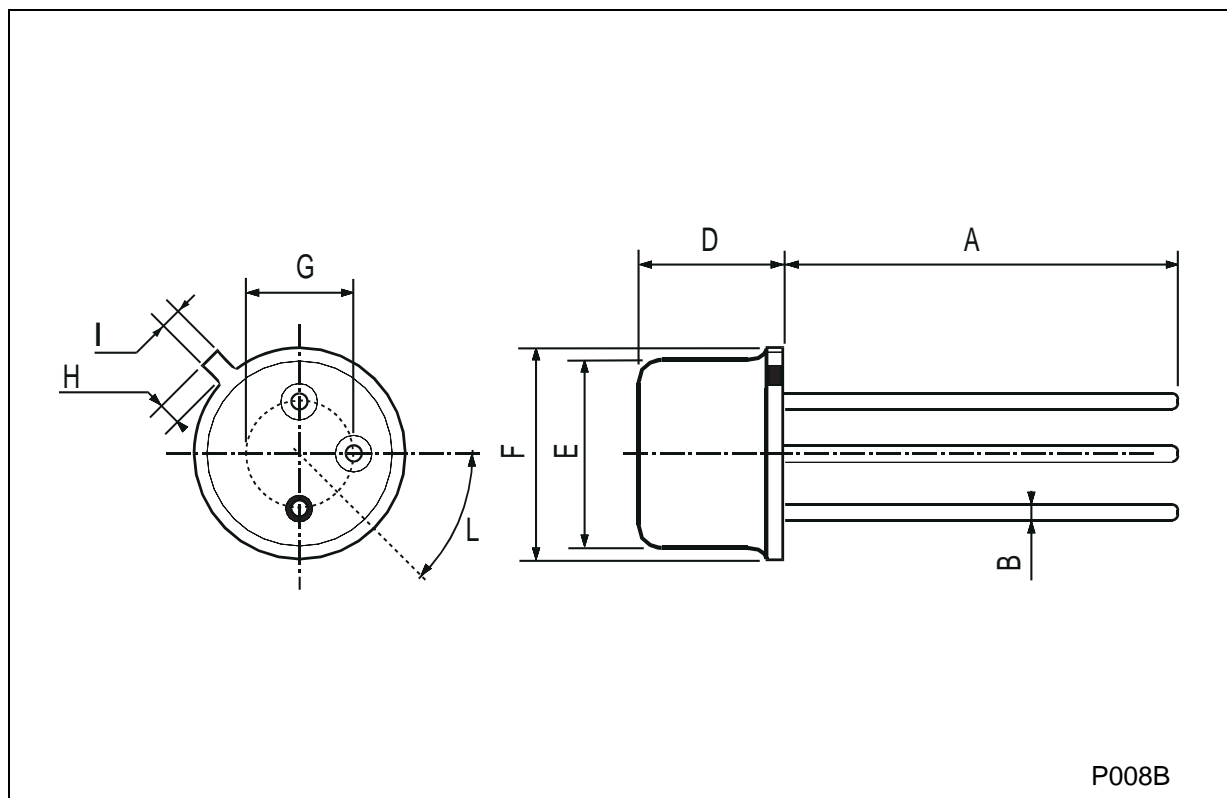
ELECTRICAL CHARACTERISTICS (T_{case} = 25 °C unless otherwise specified)

Symbol	Parameter	Test Conditions	Min.	Typ.	Max.	Unit
I _{CBO}	Collector Cut-off Current (I _E = 0)	V _{CB} = -80 V			-0.5	μA
I _{EBO}	Collector Cut-off Current (I _C = 0)	V _{EB} = -5 V		-0.1		μA
V _{(BR)CEV}	Collector-Emitter Breakdown Voltage (V _{BE} = 1.5V)	I _C = -100 μA	-100			V
V _{(BR)CEO*}	Collector-Emitter Breakdown Voltage (I _B = 0)	I _C = -10 mA	-75			V
V _{(BR)EBO}	Emitter-Base Breakdown Voltage (I _C = 0)	I _E = -100 μA	-6			V
V _{CE(sat)*}	Collector-Emitter Saturation Voltage	I _C = -500 mA I _B = -50 mA			-0.7	V
V _{BE*}	Base-Emitter Voltage	I _C = -500 mA V _{CE} = -4 V			-1.1	V
h _{FE*}	DC Current Gain	I _C = -500 mA V _{CE} = -4 V I _C = -1 A V _{CE} = -2 V	30 10		130	
f _T	Transition Frequency	I _C = -50 mA V _{CE} = -4 V f = 10 MHz	50			MHz
t _{on}	Turn-on Time	I _C = -500 mA V _{CC} = -30 V I _{B1} = -50 mA			100	ns
t _{off}	Turn-off Time	I _C = -500 mA V _{CC} = -30 V I _{B1} = -I _{B2} = -50 mA			1000	ns

* Pulsed: Pulse duration = 300 μs, duty cycle = 1 %

TO-39 MECHANICAL DATA

DIM.	mm			inch		
	MIN.	TYP.	MAX.	MIN.	TYP.	MAX.
A	12.7			0.500		
B			0.49			0.019
D			6.6			0.260
E			8.5			0.334
F			9.4			0.370
G	5.08			0.200		
H			1.2			0.047
I			0.9			0.035
L	45° (typ.)					



Information furnished is believed to be accurate and reliable. However, STMicroelectronics assumes no responsibility for the consequences of use of such information nor for any infringement of patents or other rights of third parties which may result from its use. No license is granted by implication or otherwise under any patent or patent rights of STMicroelectronics. Specification mentioned in this publication are subject to change without notice. This publication supersedes and replaces all information previously supplied. STMicroelectronics products are not authorized for use as critical components in life support devices or systems without express written approval of STMicroelectronics.

The ST logo is a trademark of STMicroelectronics

© 2002 STMicroelectronics – Printed in Italy – All Rights Reserved

STMicroelectronics GROUP OF COMPANIES

Australia - Brazil - Canada - China - Finland - France - Germany - Hong Kong - India - Israel - Italy - Japan - Malaysia - Malta - Morocco - Singapore - Spain - Sweden - Switzerland - United Kingdom - United States.

<http://www.st.com>

This datasheet has been download from:

www.datasheetcatalog.com

Datasheets for electronics components.